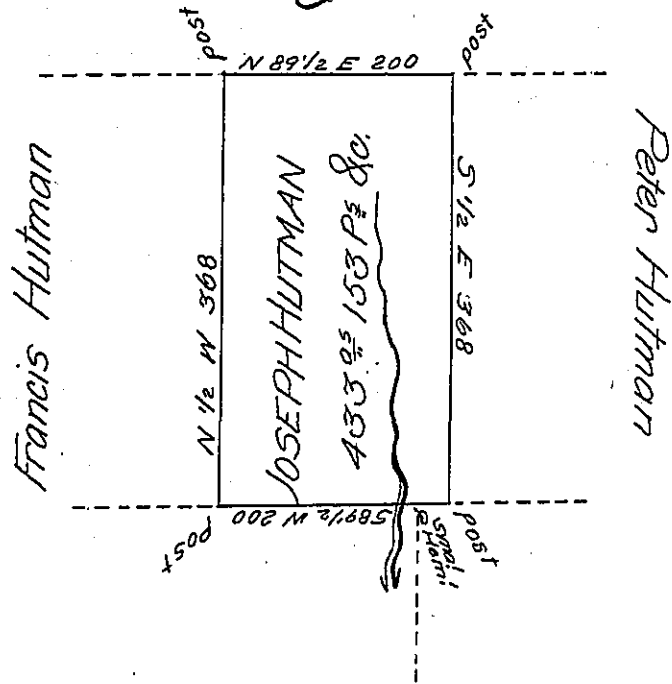


George Harris

C-93-282



PAGE-260

Robt Barnhill

Peter W Galludet

A Draught of a tract of land called \_\_\_\_\_ Situate in the County of Luzerne, Adjoining Peter Hutman & others, surveyed the 27<sup>th</sup> day of October 1792 for Joseph Hutman in pursuance of a warrant bearing date the 3<sup>d</sup> day of April 1792 Containing Four hundred thirty three Acres & one hundred & Fifty three perch<sup>s</sup> & the allowance of Six P Cent

To Daniel Brodhead Esq<sup>r</sup> }  
 Surveyor General }

Ant<sup>y</sup> Crothers D.S.

IN TESTIMONY that the above is a copy of the original remaining on file in the Department of Internal Affairs of Pennsylvania, made conformably to an Act of Assembly approved the 16th day of February, 1833, I have hereunto set my Hand and caused the Seal of said Department to be affixed at Harrisburg, this thirty first day of May 1905

*Joseph B. Brown*  
 Secretary of Internal Affairs.